

三島市中郷小学校 学校評価システム 年度比較表

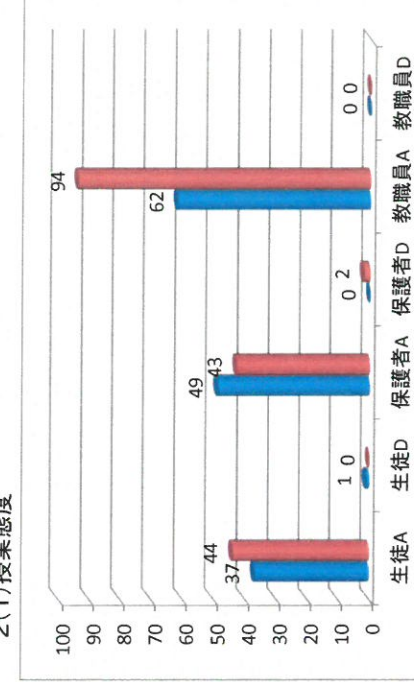
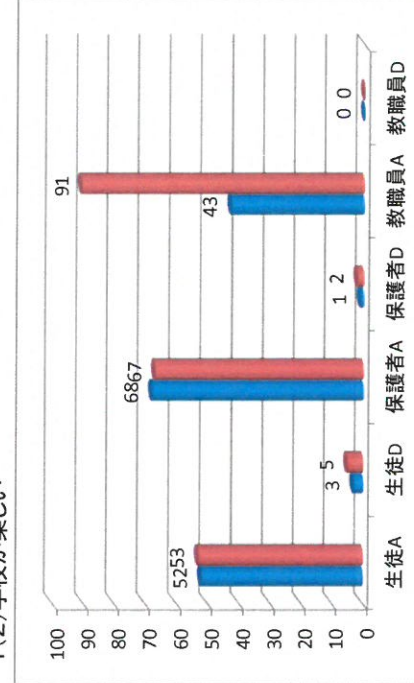
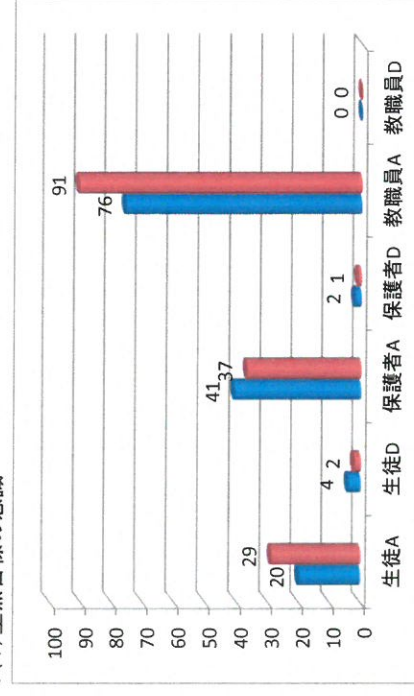
1(1)重点目標の意識
 A:「よく当てはまる」 D:「まったく当てはまらない」 ※「やや当てはまる」「あまり当てはまらない」は除外した。

単位: %

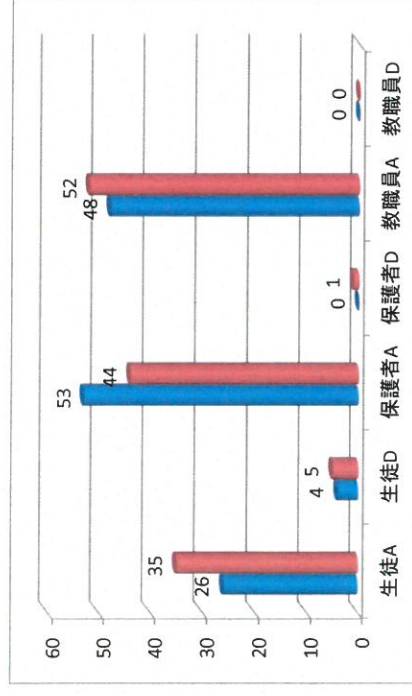
H29

H30

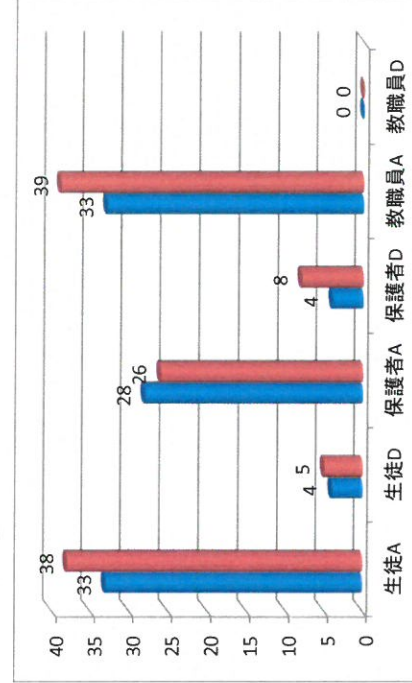
2(1)授業態度



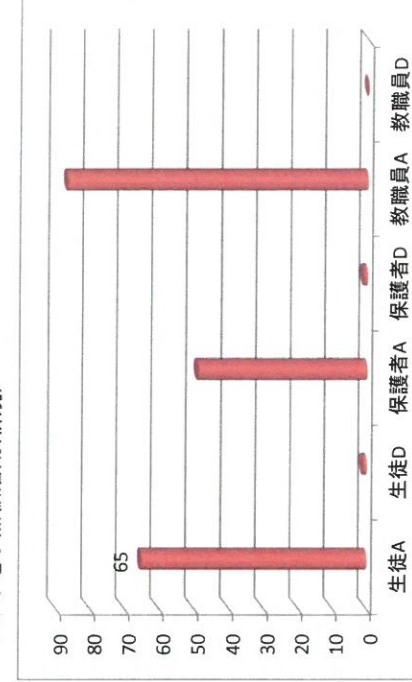
2(2)成績目標到達



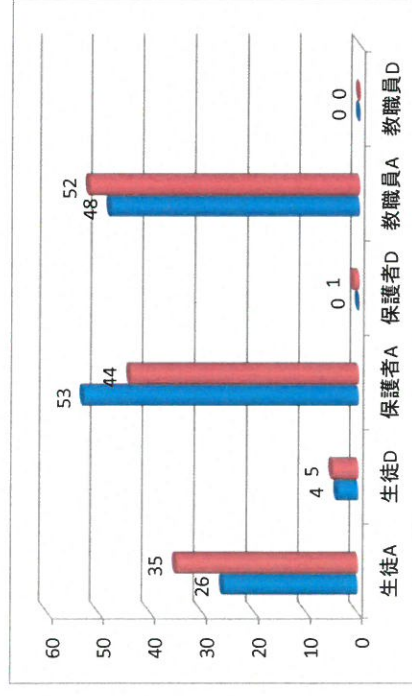
2(3)家庭学習



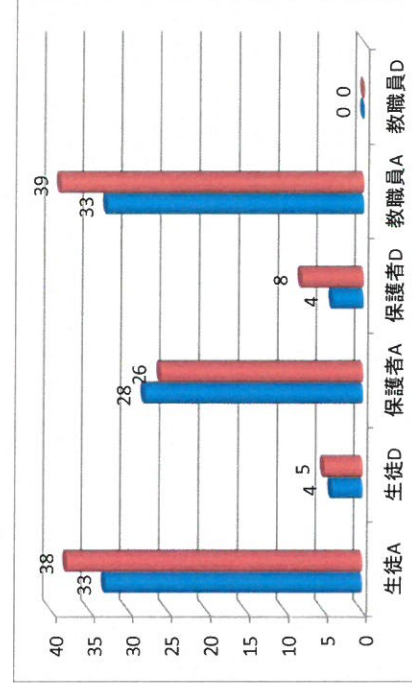
2(4)電子黒板活用(新規)



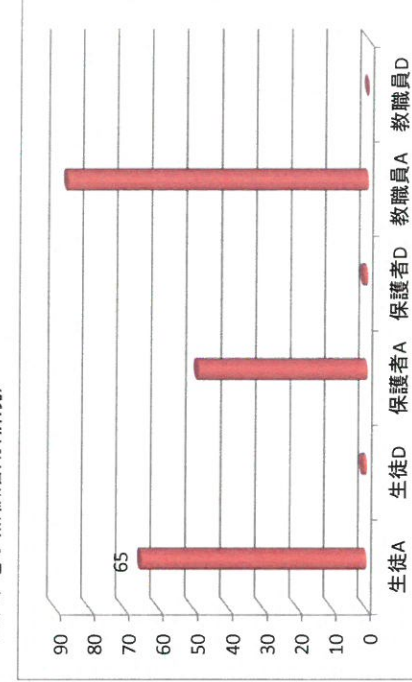
2(2)成績目標到達



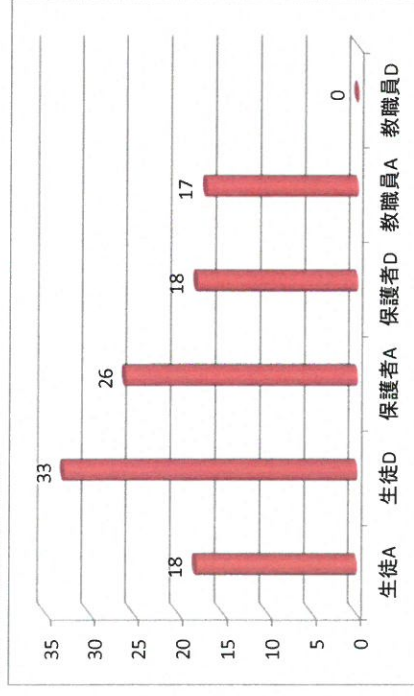
2(3)家庭学習



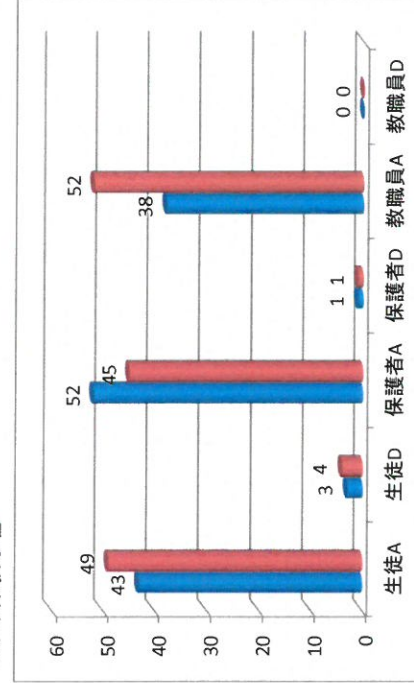
2(4)電子黒板活用(新規)



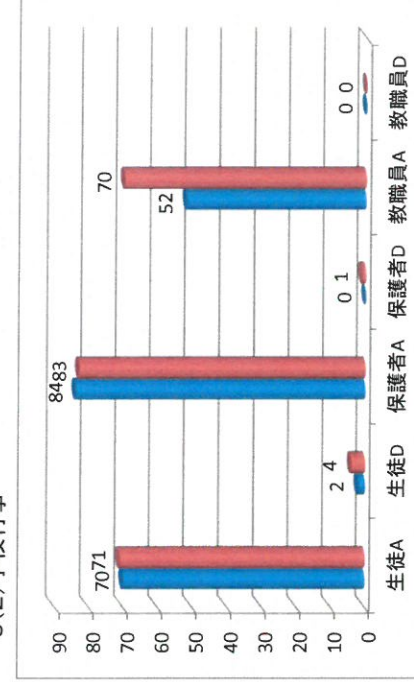
2(5)図書館活用(新規)



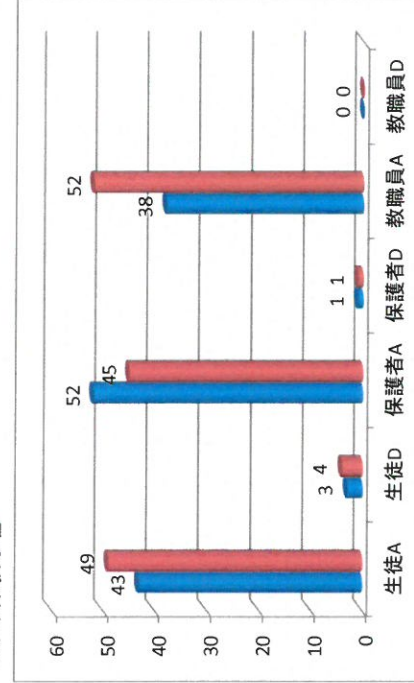
3(1)体験学習



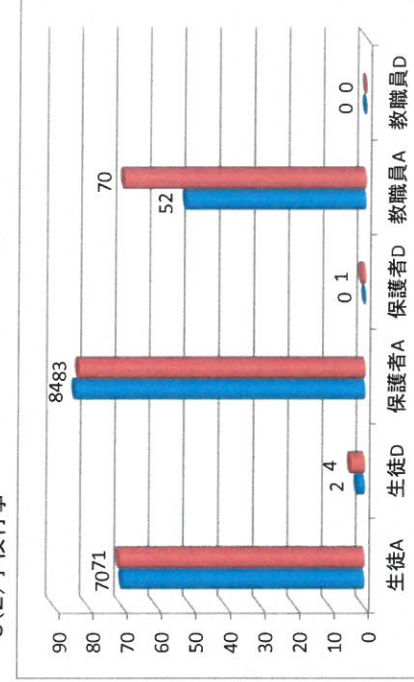
3(2)学校行事



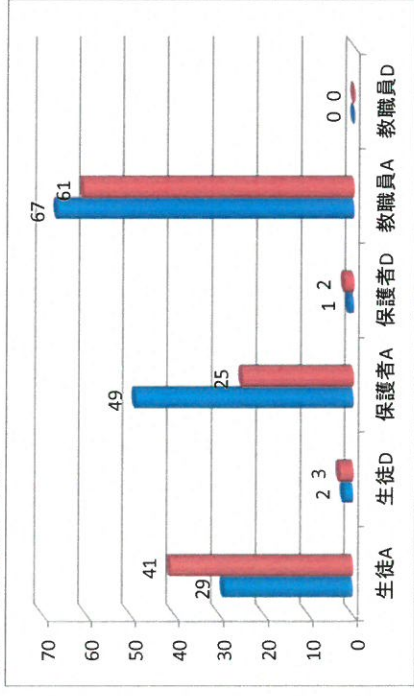
3(1)体験学習



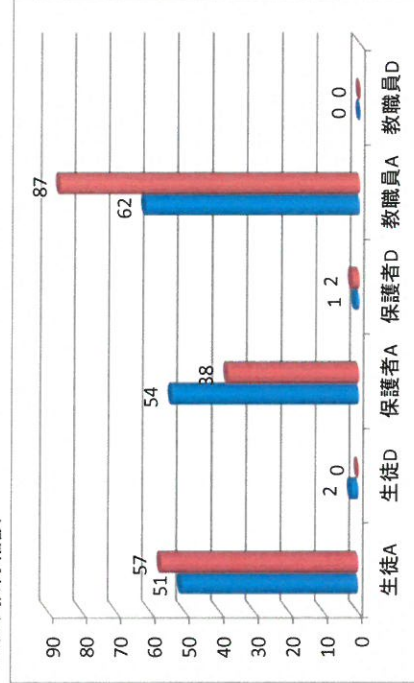
3(2)学校行事



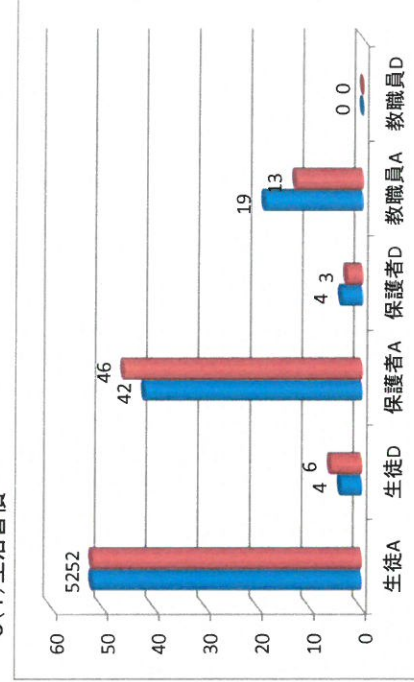
4(1)いじめのない学級



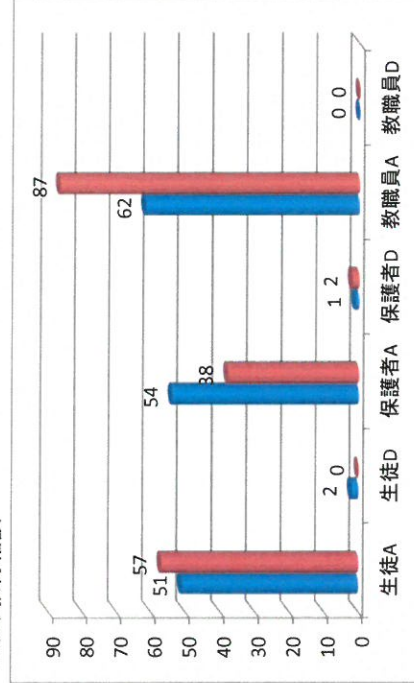
4(2)教育相談



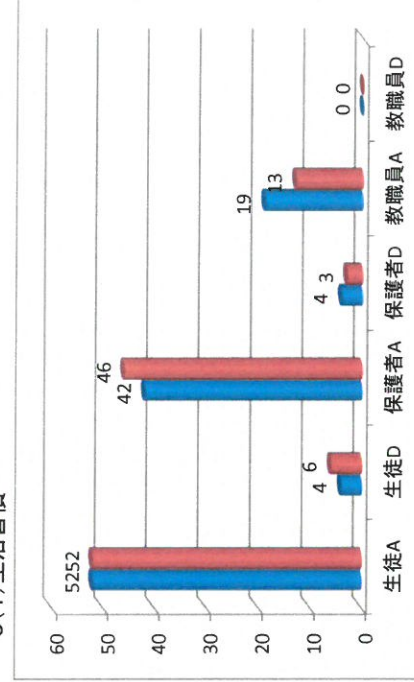
5(1)生活習慣



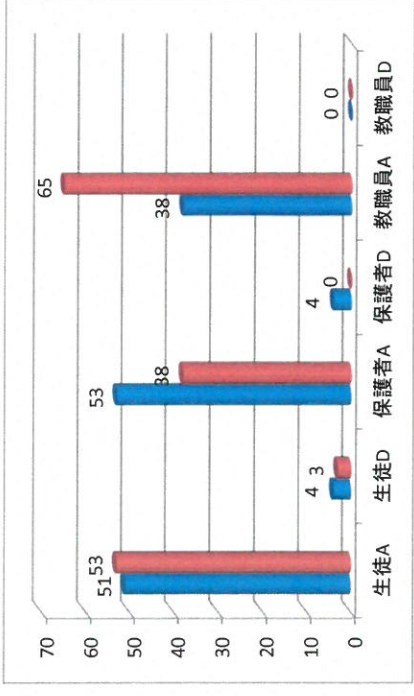
4(2)教育相談



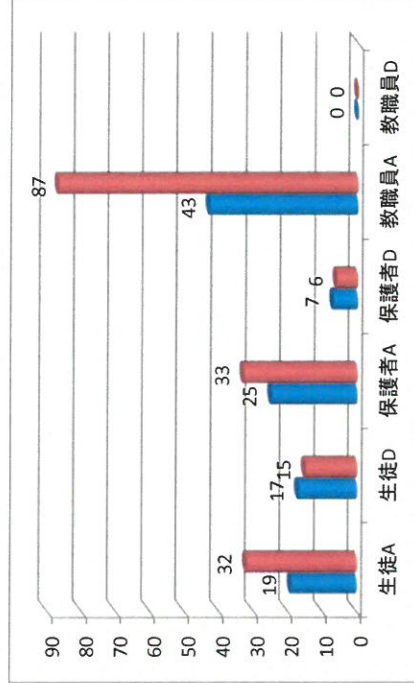
5(1)生活習慣



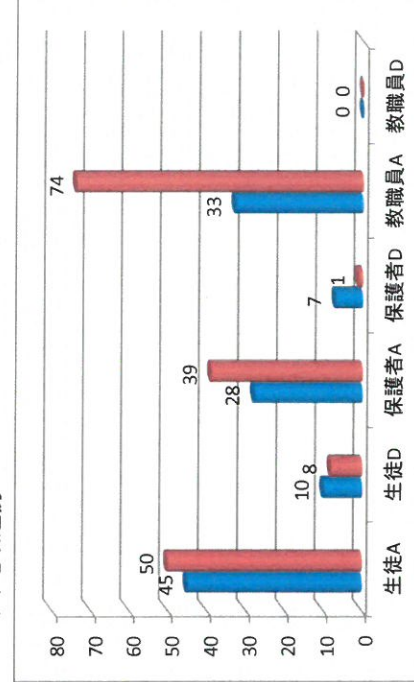
5(2)事故、病気予防



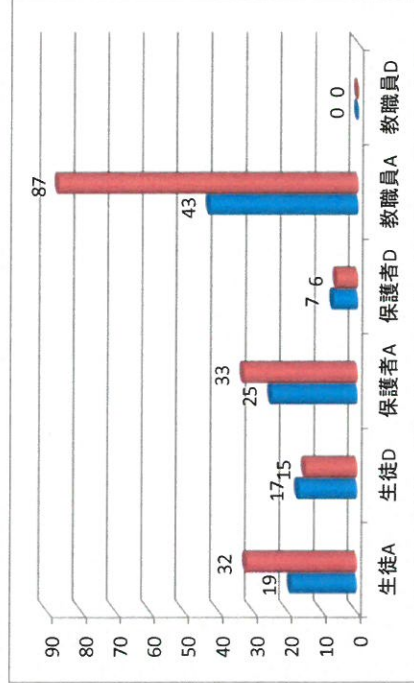
6(1)情報発信



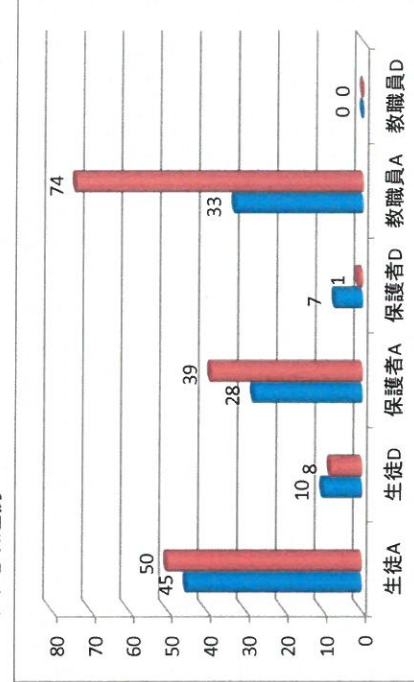
7(1)地域連携



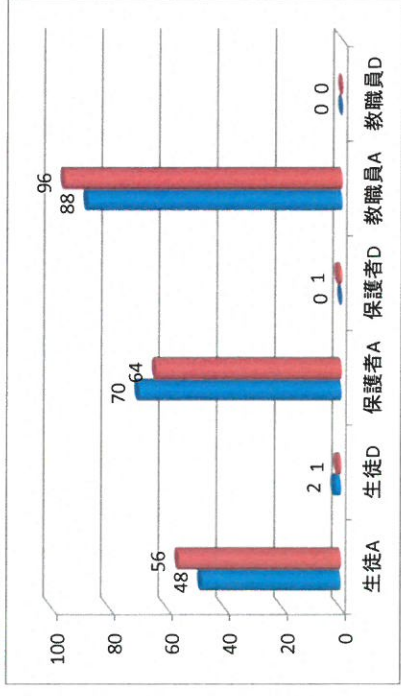
6(1)情報発信



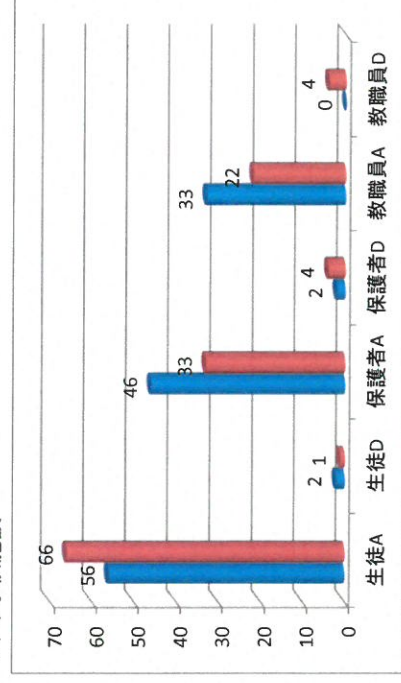
7(1)地域連携



7(2)学校対応



8(1)学校施設



7(2)学校対応

