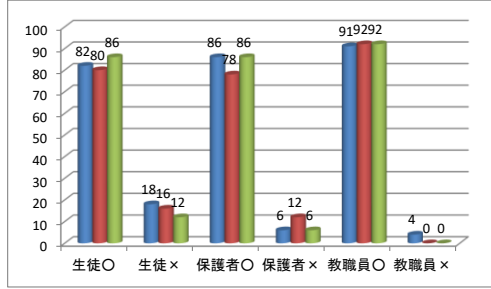


三島市立北上中学校 学校評価システム 年度比較表

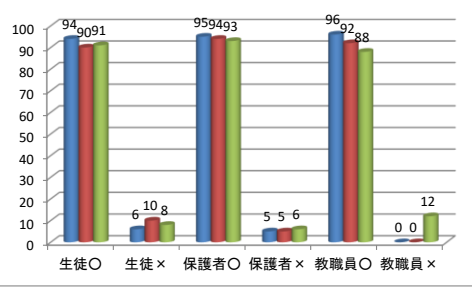
単位: %
■ H27 ■ H28 ■ H29

○: はい・だいたい ×: いいえ・あまり

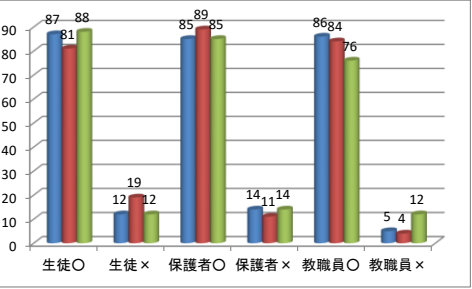
1(1)重点目標の意識



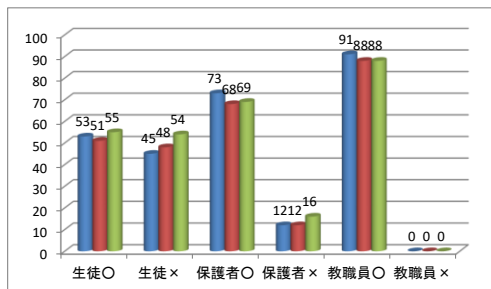
1(2)学校が楽しい



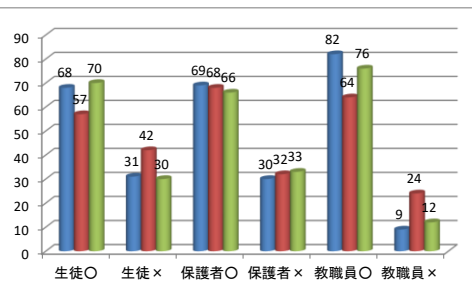
2(1)忘れ物・提出物



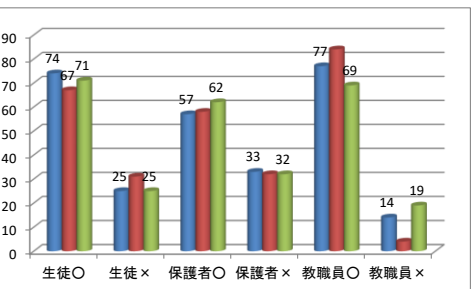
2(2)テスト目標点



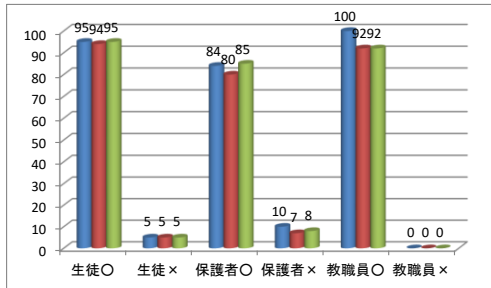
2(3)家庭学習



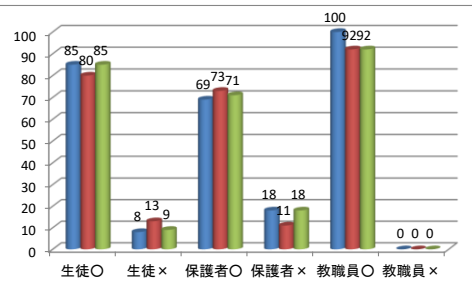
2(4)進路指導



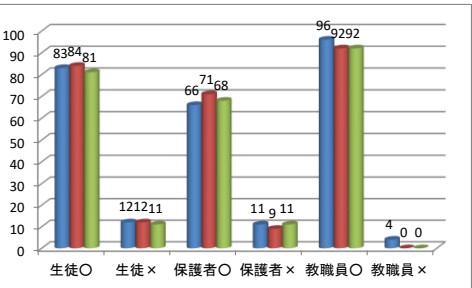
3(1)ルール・マナー



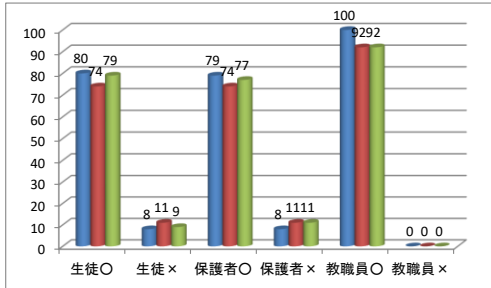
3(2)個への指導



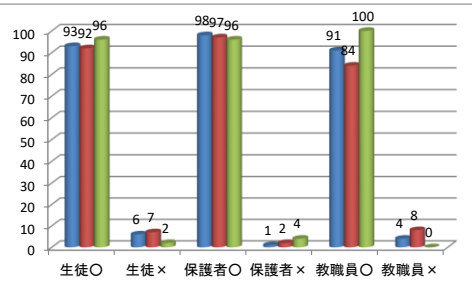
3(3)いじめのない学級づくり



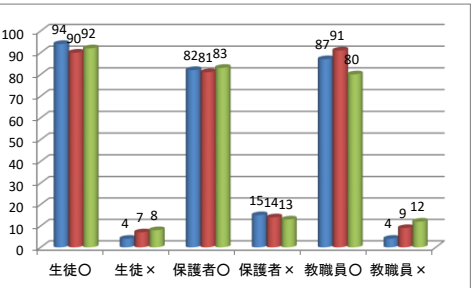
3(4)教育相談



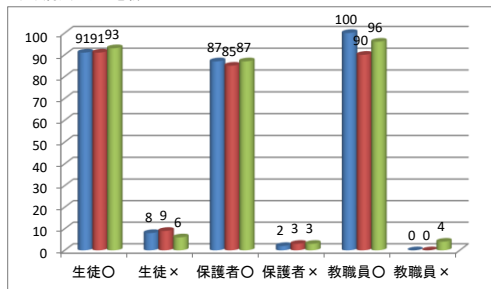
4(1)学校行事



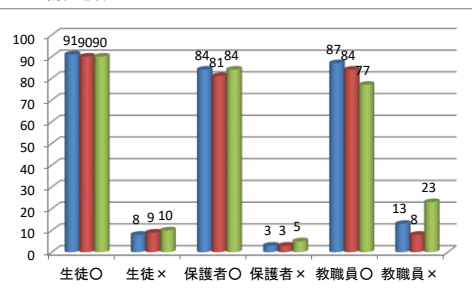
4(2)部活動



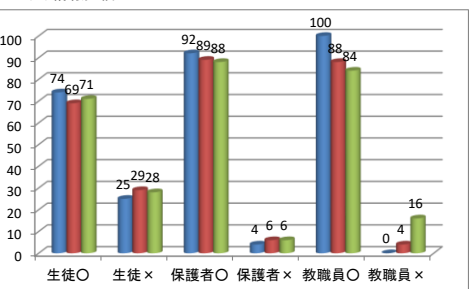
5(1)病気・けが意識



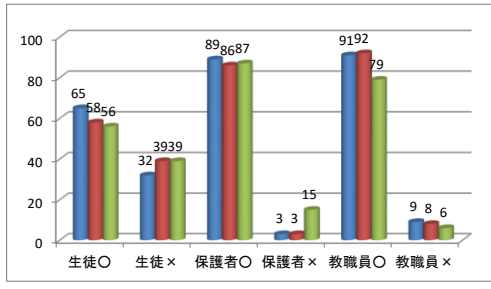
5(2)防災意識



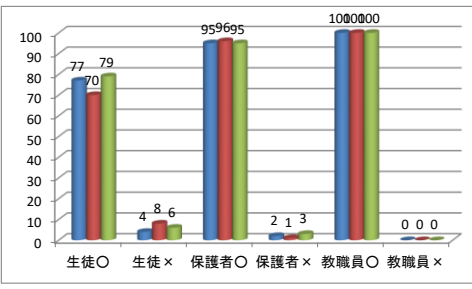
6(1)情報発信



7(1)地域連携



7(2)学校対応



8(1)学校施設

